



streaming  
energy











Up to  
**1MW**

electrical efficiency  
**>97%**

CCS connection  
**360°**

World's smallest HPC  
station

>97% electrical efficiency,  
+ up to 3% energy  
recuperation

Ultra lightweight charging  
handle

360° CCS connection

Integrated street lighting

RingNet ready







### Service

- :: Easy access
- :: High reliability
- :: Max. availability
- :: Exchangeable modules
- :: Hot plug capability



### Software

- :: Access and user control by Android/iOS application
- :: Customer support from backend
- :: Dynamic energy management

### Illumination

- :: Integrated streetlight
- :: Integrated lighting for communication
- :: Environment-friendly illumination
- :: Backend controlled lighting
- :: Individual illumination for advertising and branding



### Charging technology

- :: Parallel, sequential and priority charging
- :: Liquid cooled power electronics
- :: Efficiency > 97 % (electric)

### Accessibility

- :: 360° charging gun connection
- :: Variable connection arm
- :: No cables on ground
- :: Automated cable re-positioning
- :: Barrier-free access and handling
- :: Compatible to various vehicle types

### Safety

- :: Collision protection by flexible design
- :: Safe handling by smooth materials
- :: Anti-Vandalism and safety devices

### Urban furniture

- :: Compact architecture and construction
- :: Seamless area integration
- :: Footprint: 0,004 m² only!

### Ecosystem

- :: No noise emission
- :: Active waste heat usage



### Individualisation

- :: White labeled product
- :: White labeled app and interface
- :: Operator homologation
- :: Open frontend and backend

### CCS/GBT/NACS up to 1000A

- :: Vehicle type independent connection
- :: Stable power supply
- :: Lightweight charging cable and plug
- :: High Power Charging
- :: Uncooled and cooled version available



# SupraCharger

Your E-Mobility-Hub



## DC input

- Input voltage range: 500 V–1150 V DC
- Energy from: DC-Source, PV, Battery

## DC output

- Max. output power: 4x up to 1000kW
- Output voltage range: 150V–950V DC

## Liquid cooling

- Input Liquid Temperature:  $-20^{\circ}\text{C}$ – $+50^{\circ}\text{C}$
- Flow rate: 110 bis 150l/min
- Liquid: Water /Glycol (60%/40%)

## Environment

- Storage temperature:  $-40^{\circ}$ – $+70^{\circ}$
- Communication: WIFI, Ethernet, Open Charge Point Protocol 2.0 (OCPP)
- Average operating time between failures: > 500.000 hours
- Safety standards: IEC 61851-1, IEC 61851-23, CE
- Electromagnetic compatibility: 2014/30/EU





# DC Cube

The DC Cube is the DC fast charger with the world's smallest required installation space.

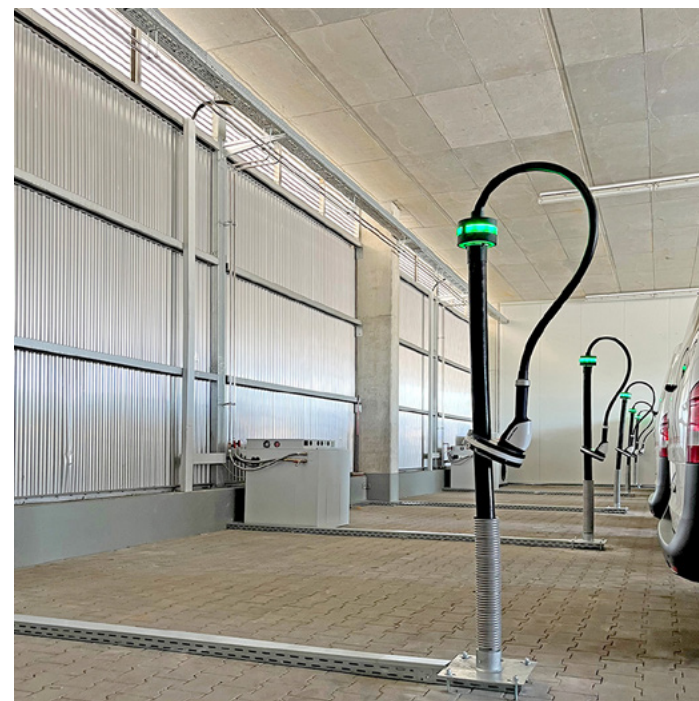


## DC input

- Input voltage range: 500 V–1150 V DC
- Max. input current: 220 A

## DC output

- Max. output power: 140 kW –950 kW
- Output voltage range: 200 V–950 V DC
- CCS PLC: DIN 70121, ISO 15118



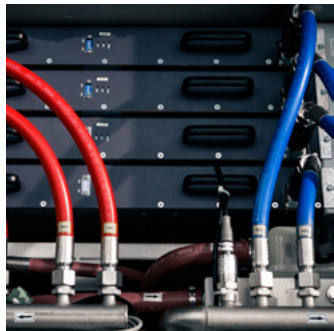
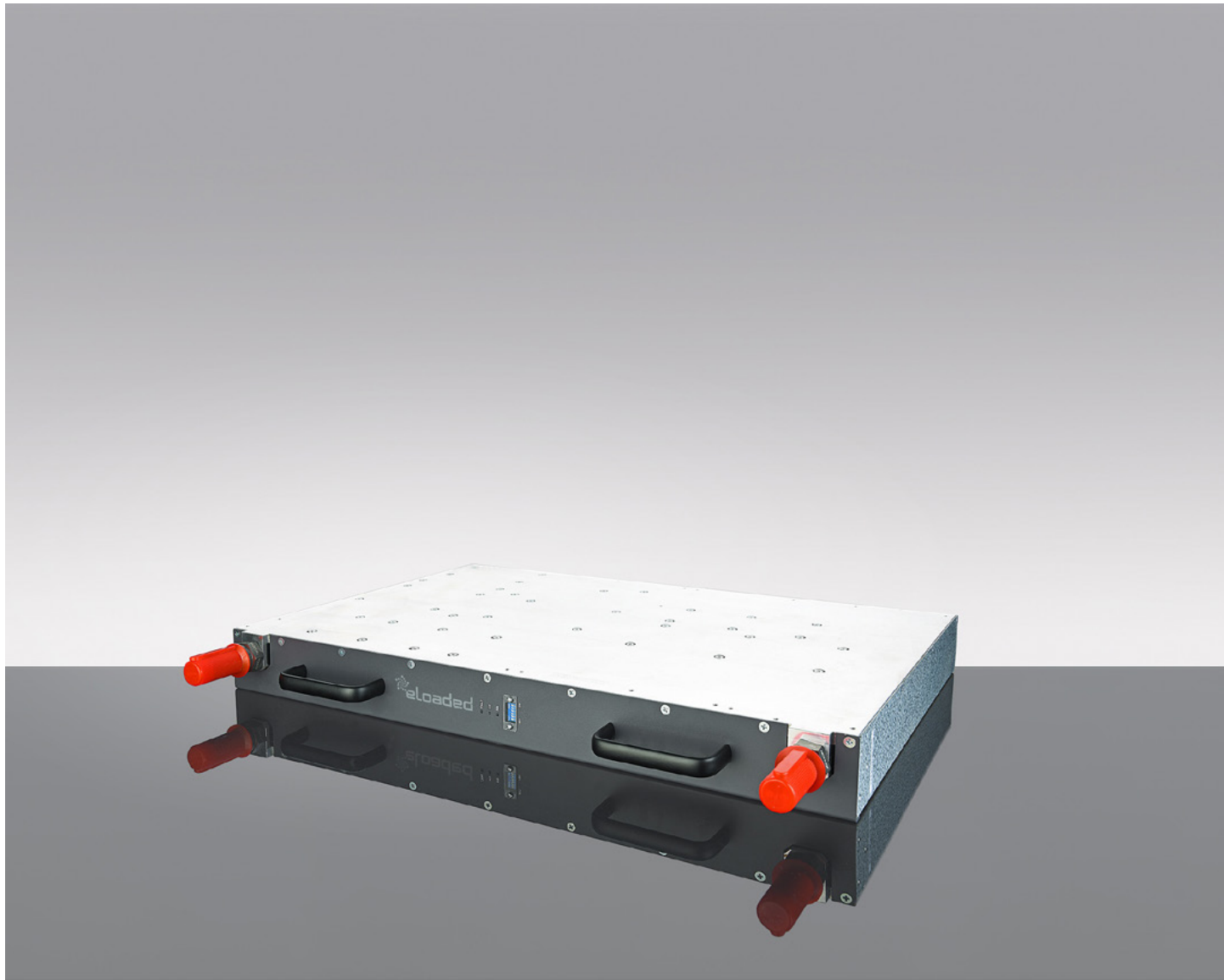
## Liquid cooling

- Controllable liquid temperature: -20°C–+50°C
- Liquid: non-conductive, biodegradable
- Thermal management: external use of loss heat possible

## Environment

- Storage temperature: -40°~+70°
- Communication: WIFI, Ethernet, Open Charge Point Protocol 2.0 (OCPP)
- Average operating time between failures: > 500.000 hours
- Safety standards: IEC 61851-1, IEC 61851-23, CE
- Electromagnetic compatibility: 2014/30/EU
- Protection class: IP68





# DC Rectifier

DCRectifier 35kW the liquid cooled DC power source

## DC input

- Input Range: 500V to 1150V DC
- Max. Input Current: 55A

## DC output

- Max. Output Power: 35kW
- Output Voltage Range: up to 1000V DC

## Liquid cooling

- Controllable Liquid Temperature: +5°C to +55°C
- Flow Rate: 8l/min / up to 10 bar

## Environment

- Storage Temperature: -40°C to +70°C
- Communication: CAN bus
- MTBF: > 500,000 hours
- Safety: EU: IEC 61851-1, IEC 61851-23, CE
- EMC: EU: 2014/30/EU
- Dimension: 638x411x64mm



# DC Source

DC Source – for stable power grids with up to 32 MW managable DC-Power

480 kW – 32 MW  
420-680 kW per unit  
Microgrid up to 32 MW  
DC Connect 1000





## DC Box

Quickly positionable  
charging box with 40 kW  
output power

### DC input

- CEE connection: 125 A
- Input voltage range: 3Phase, 260Vac – 530Vac

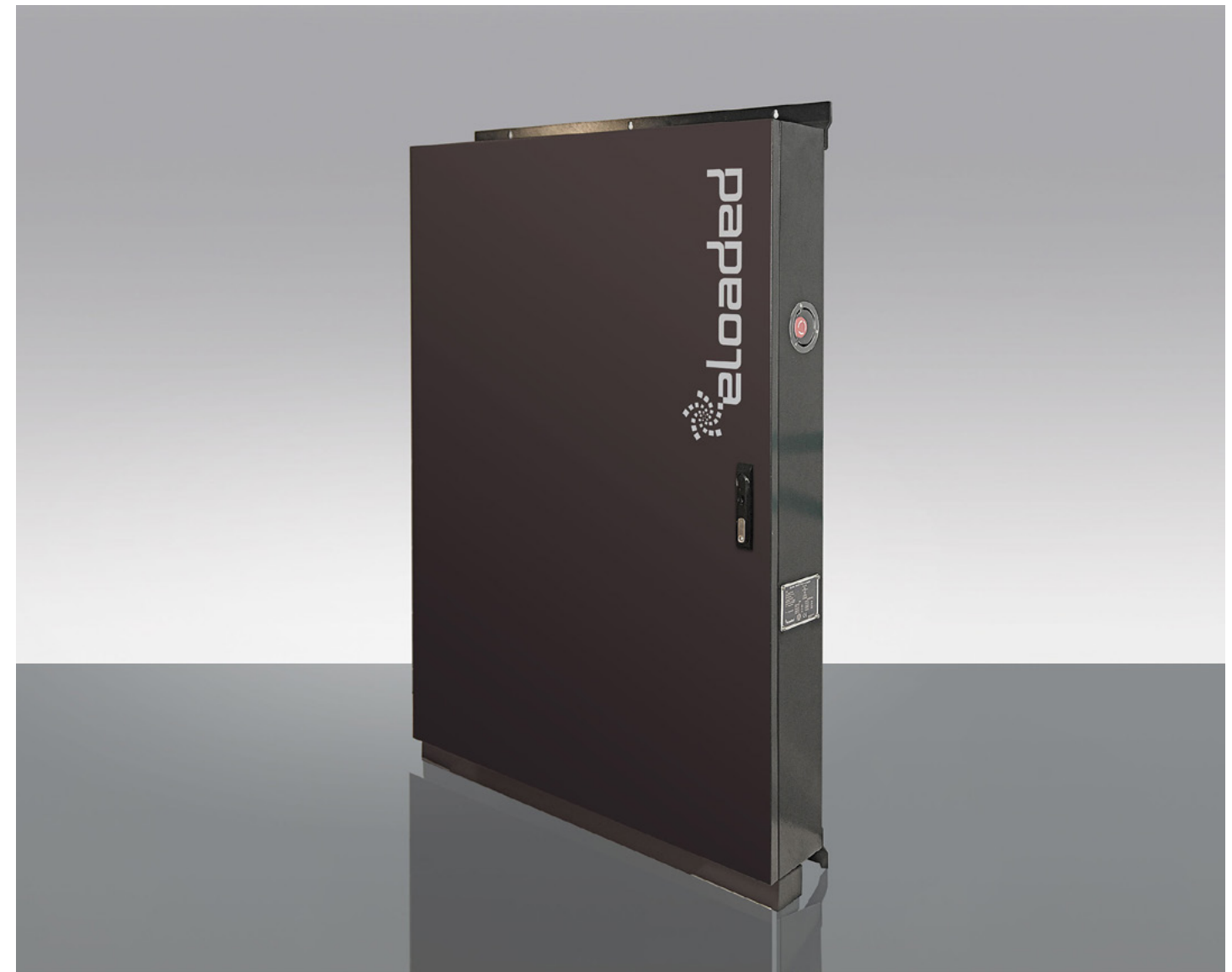
### DC output

- Max. output power: 40 kW
- Output voltage range: 200 V–950 V DC
- CCS PLC: DIN 70121, ISO 15118

### Environment

- Storage temperature:  $-40^{\circ}\sim +70^{\circ}$
- Communication: WIFI
- Average operating time between failures: >500.000 hours
- Safety standards: IEC 61851-1, IEC 61851-23, CE
- Electromagnetic compatibility: 2014/30/EU

### Air cooling



## DC Wall

The facade charger is the  
worlds thinnest and smallest  
DC high power charger

### DC input

- Input voltage range: 500 V–1000 V DC

### DC output

- Max. output power: 70 kW–280 kW
- Output voltage range: 200 V–950 V DC

### Liquid cooling

- Input temperature of the liquid:  $-20^{\circ}\text{C}\sim +50^{\circ}\text{C}$
- Flow rate: 15–20 l/min

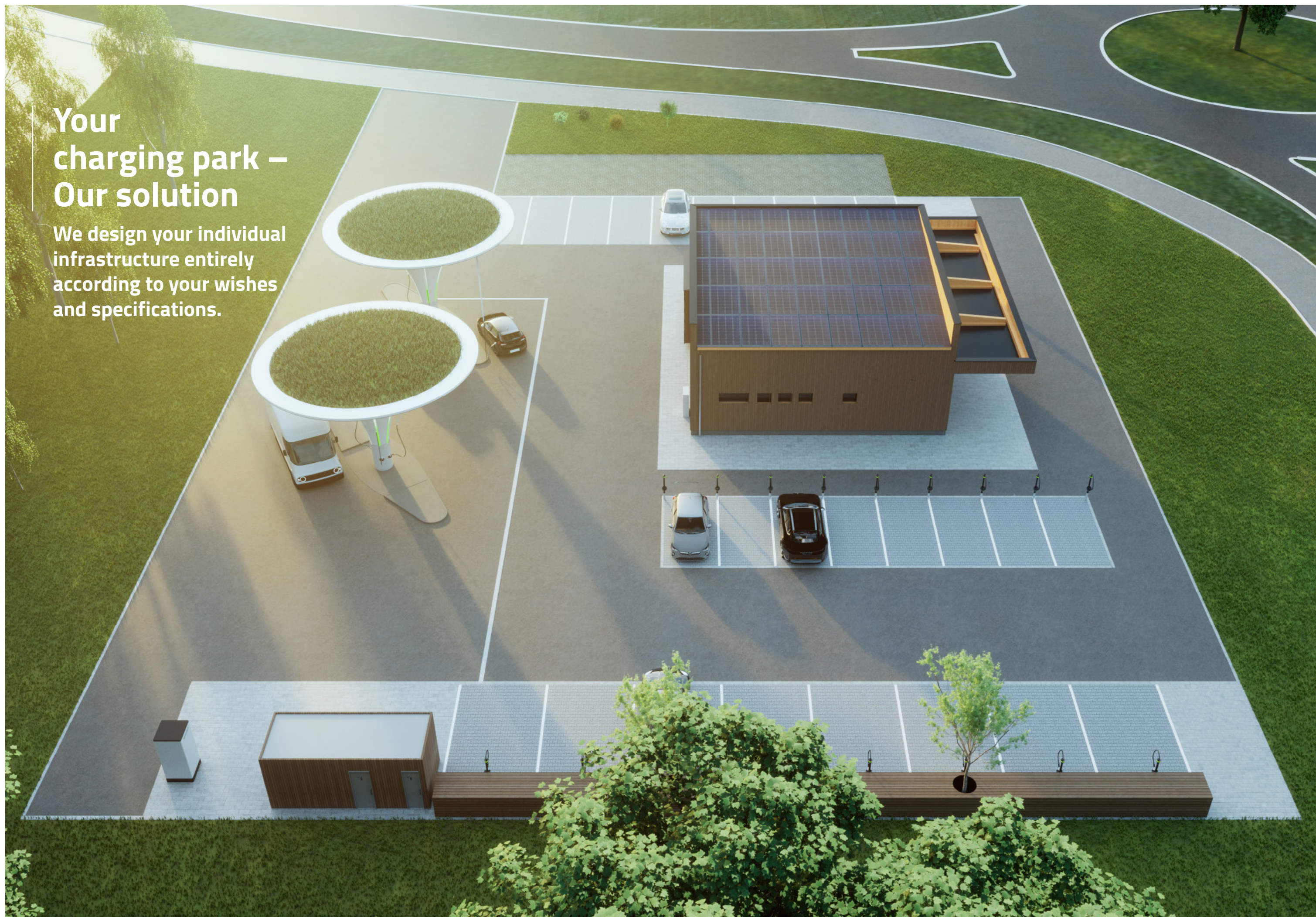
### Environment

- Storage temperature:  $-40^{\circ}\sim +70^{\circ}$
- Communication: WIFI and Ethernet
- Average operating time between failures: >500.000 hours
- Safety standards: IEC 61851-1, IEC 61851-23
- Electromagnetic compatibility: 2014/30/EU

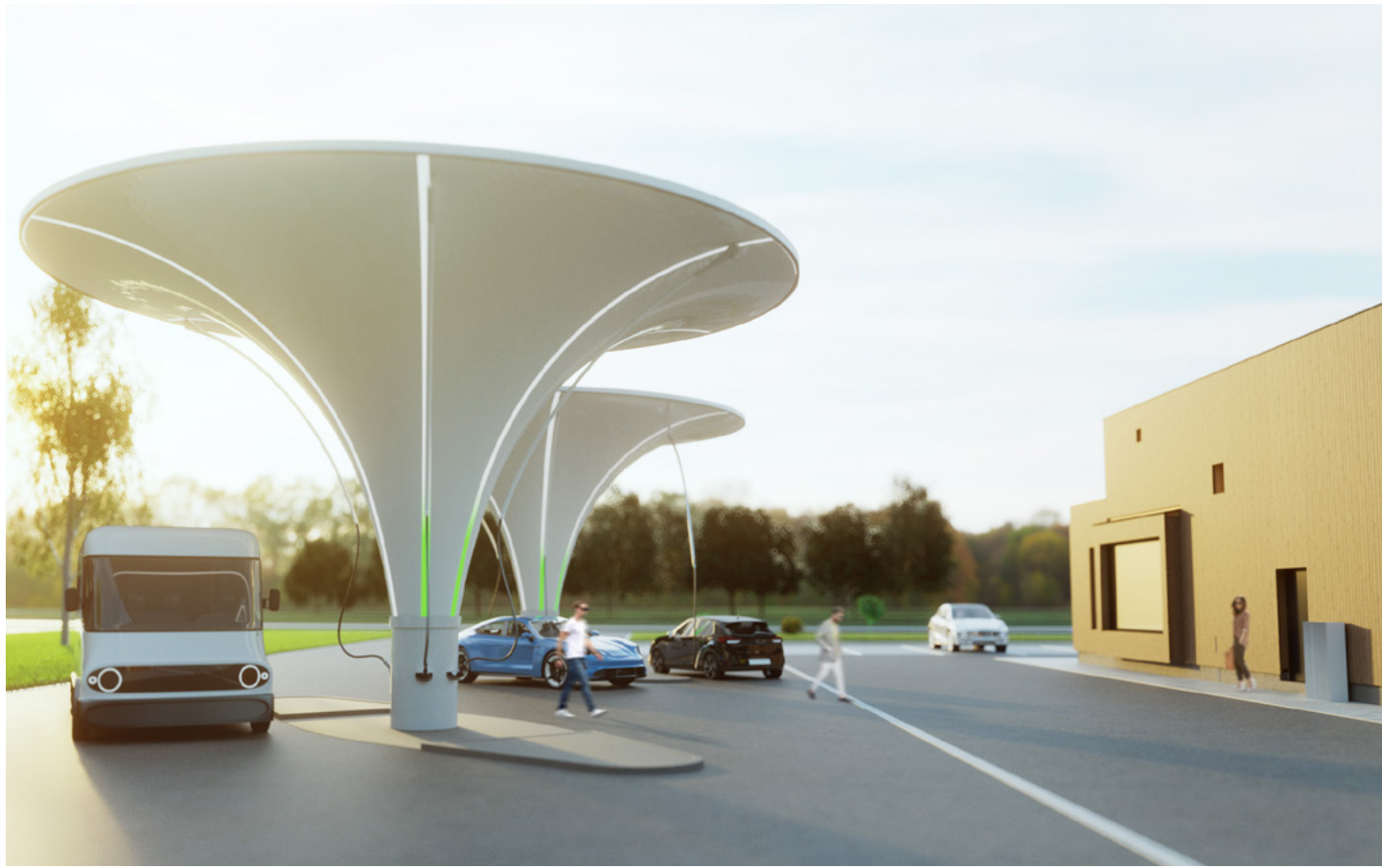


# Your charging park – Our solution

We design your individual  
infrastructure entirely  
according to your wishes  
and specifications.











---

**eLoaded GmbH**

Fabrikstraße 1

D - 86356 Neusäß

[info@eloaded.eu](mailto:info@eloaded.eu)

[www.eloaded.eu](http://www.eloaded.eu)

---